

- Designed for **HVLP** applications
- Prevents dangerous hose whips

One Way Shut Off

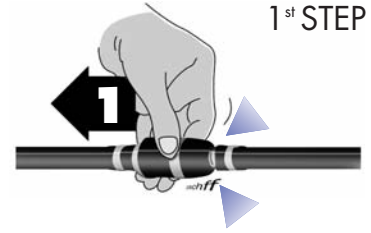


ADVANCED TECHNOLOGY

Two-way safety disconnection

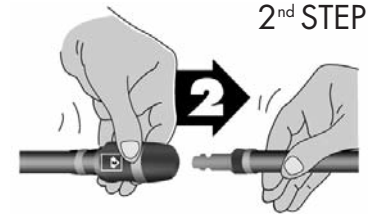


1- Pulling back on the coupler allows the pressure to escape.



2- A simple push disconnects the plug.

The two-way safety disconnection system avoids accidental disconnections.



LARGE AIR FLOW CAPACITY

67 SCFM 

- Greater air flow increase the performance of air tools.

TECHNICAL INNOVATION

Coupler body manufactured with an extremely resistant composite material

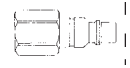


- Resistant to abrasion
- Shockproof
- Vibration resistant

FEMALE THREAD

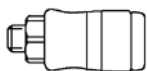


Coupler



Plug

MALE THREAD

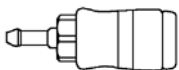


Coupler



Plug

HOSE BARB



Coupler



Plug

		Plug	Automatic Coupler
FEMALE THREAD	Thread (F) NPT in.	Part No.	Part No.
		23.1142	24.6442
	1/4	23.1162	24.6462
	1/2	23.1172	24.6472
MALE THREAD	Thread (F) NPT in.	Part No.	Part No.
		23.1242	24.6542
	1/4	23.1262	24.6562
	1/2	23.1272	24.6572
HOSE BARB	Hose I.D. in.	Part No.	Part No.
		23.1352	24.6652
	5/16	23.1362	24.6662
	3/8		

Interchangeable with High Flow plugs.



Type H-1

The AirMax VAL High Flow Safety Couplers are interchangeable with the H-1 plugs (page 49 of the catalogue).

Interchangeable CEJN 320

The Coupler of the Year 2000



Essential for worker's security

THE LATEST INNOVATION IN THE FIELD OF PNEUMATIC COUPLERS



One Way Shut-Off



Applications

- Safe and reliable, resists to the most demanding industrial applications
- Ideal for assembly lines, body shops, work shops, paint shops, the furniture industry and the agricultural industry
- Substitute for stainless steel couplers in corrosive environments

Features

- Reliable and ergonomic manipulation
- Very resistant, replaces brass and steel couplers
- Lightweight, does not scratch surfaces
- Allows for greater air flow
- Airtight, prevents costly air leaks
- Safe and fast disconnection even under pressure
- Compatible with all industrial type couplers on the market
- 2 way safety system prevents accidental disconnections

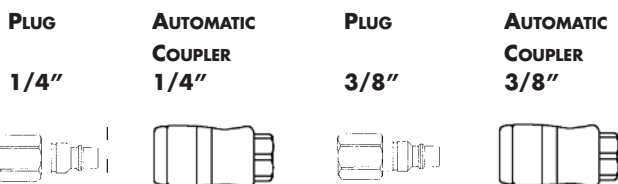
Specifications

Maximum Working Pressure
230 PSI

Construction
Composite materials reinforced with fiberglass
Threaded part: Aluminium

Standards
ISO 4414, ISO 6150, DIN EN 983

FEMALE THREAD



Thread (F) NPT in.	Plug Part No.	Automatic Coupler Part No.	Plug Part No.	Automatic Coupler Part No.
1/4	24.1142	24.3442	24.2142	24.3742
3/8	24.1162	24.3462	24.2162	24.3762
1/2	---	---	24.2172	24.3772

MALE THREAD



Thread (M) NPT in.	Plug Part No.	Automatic Coupler Part No.	Plug Part No.	Automatic Coupler Part No.
1/4	24.1242	24.3542	24.2242	---
3/8	24.1262	24.3562	24.2262	24.3862
1/2	---	---	24.2272	24.3872

HOSE BARB



Hose I.D. in.	Plug Part No.	Automatic Coupler Part No.	Plug Part No.	Automatic Coupler Part No.
1/4	24.1342	24.3642	24.2342	---
5/16	24.1352	---	24.2352	24.3952
3/8	24.1362	24.3662	24.2362	24.3962
1/2	---	---	24.2372	24.3972

I-3 Type available on request