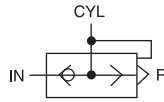




ALUMINUM QUICK EXHAUST VALVE



Features

- Valve allowing the air from the cylinder to be exhausted immediately
- Valve is mounted on the cylinder port and may be fitted with a muffler

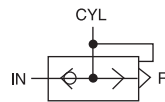
Part No.	Description	Packaging
74.1022	1/8" (F) NPT - 145 PSI	1
74.1034	1/4" (F) NPT - 145 PSI	1
74.1036	3/8" (F) NPT - 145 PSI	1
74.1047	1/2" (F) NPT - 145 PSI	1
74.1048	3/4" (F) NPT - 145 PSI	1

QUICK EXHAUST VALVE



Part No.	Port	INvOUT	OUTvEXH
74.1210	M5	2	2.8
74.1212	1/8"	4	5.8
74.1222	1/8"	25	25
74.1224	1/4"	35	40
74.1234	1/4"	40	42
74.1236	3/8"	60	70
74.1247	1/2"	105	115
74.1248	3/4"	135	180

ALUMINUM QUICK EXHAUST VALVE

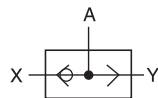


Features

- Valve allowing the air from the cylinder to be exhausted immediately
- Valve is mounted on the cylinder port and may be fitted with a muffler

Part No.	Description	Packaging
74.1322	1/8" (F) NPT - 145 PSI	1
74.1334	1/4" (F) NPT - 145 PSI	1
74.1336	3/8" (F) NPT - 145 PSI	1
74.1347	1/2" (F) NPT - 145 PSI	1
74.1348	3/4" (F) NPT - 145 PSI	1

SHUTTLE VALVE



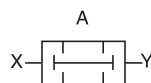
Features

Valve consisting of 2 inlets and outlet

- Valve "OR"**
- Activated by one of the 2 air inlet
 - The air inlet under pressure, it is automatically connected to a common air outlet while the other inlet is blocked

Valve "OR"

Part No.	Description	Packaging
74.3002	1/8" NPT	1
74.3004	1/4" NPT	1



- Valve "AND"**
- In order to activate the valve, both air inlets must be simultaneously be under pressure
 - When both air inlets are under pressure, they are automatically connected to a common air outlet without contact with the two air inlets

Valve "AND"

Part No.	Description	Packaging
74.3012	1/8" NPT	1