

BRASS VERTICAL VALVE

2 way / 2 position

1/8" NPT



135 PSI

Normally Closed	Normally Opened	Cv	Voltage	Replacement Solenoid
78.1312	78.1322	.266	12 VDC	78.1082
78.1313	78.1323	.266	24 VDC	78.1083
78.1316	78.1326	.266	24 VAC	78.1086
78.1317*	78.1327*	.266	120 VAC	78.1087
78.1318	78.1328	.266	240 VAC	78.1088

*(Standard)



1/8" NPT

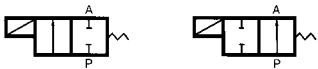


200 PSI

Normally Closed	Normally Opened	Cv	Voltage	Replacement Solenoid
78.1332	78.1342	.224	12 VDC	78.1082
78.1333	78.1343	.224	24 VDC	78.1083
78.1336	78.1346	.224	24 VAC	78.1086
78.1337*	78.1347*	.224	120 VAC	78.1087
78.1338	78.1348	.224	240 VAC	78.1088

*(Standard)

1/4" NPT

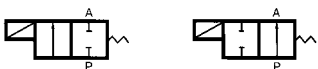


135 PSI

Normally Closed	Normally Opened	Cv	Voltage	Replacement Solenoid
78.1352	78.1362	.266	12 VDC	78.1082
78.1353	78.1363	.266	24 VDC	78.1083
78.1356	78.1366	.266	24 VAC	78.1086
78.1357*	78.1367*	.266	120 VAC	78.1087
78.1358	78.1368	.266	240 VAC	78.1088

*(Standard)

1/4" NPT



200 PSI

Normally Closed	Normally Opened	Cv	Voltage	Replacement Solenoid
78.1372	78.1382	.224	12 VDC	78.1082
78.1373	78.1383	.224	24 VDC	78.1083
78.1376	78.1386	.224	24 VAC	78.1086
78.1377*	78.1387*	.224	120 VAC	78.1087
78.1378	78.1388	.224	240 VAC	78.1088

*(Standard)

Applications

- Ideal for water, compressed air and oil

Features

- Vertical design valve
- Compact mechanism using one moving part
- Port sizes: 2.4 mm or 3.0 mm
- Response time: 16 to 36 ms (complete cycle)

Specifications

Maximum Working Pressure

Port size 2.4 mm : 200 PSI

Port Size 3.0 mm : 135 PSI

Working Temperature

-10°C to 90°C (14°F to 194°F)

Construction

Body : Brass

Operator (Solenoid) : Stainless steel

Seal: Viton

2 way / 2 position



ALUMINUM "MINI" VALVE

1/4" NPT



Normally Closed	Normally Opened	Cv	Voltage	Replacement Solenoid
78.1432	78.1442	.245	12 VDC	78.1082
78.1433	78.1443	.245	24 VDC	78.1083
78.1436	78.1446	.245	24 VAC	78.1086
78.1437*	78.1447*	.245	120 VAC	78.1087
78.1438	78.1448	.245	240 VAC	78.1088

*(Standard)

Features

- Long life MINI pneumatic valve
- Light, compact design in aluminum, brass or stainless steel
- Water, dust and contaminant resistant
- With DIN connector
- Available in normally opened or closed configuration

Specifications

Maximum Working Pressure

150 PSI

Working Temperature

-10°C to 50°C (14°F to 122°F)

Voltages

Standard : 120 VAC

Also available : 12 VDC, 24 VDC

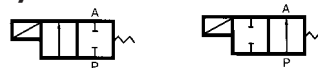
24 VAC, 240 VAC / 60 Hz

Cv

0.245

BRASS "MINI" VALVE

1/4" NPT



Normally Closed	Normally Opened	Cv	Voltage	Replacement Solenoid
78.1432	78.1442	.245	12 VDC	78.1082
78.1433	78.1443	.245	24 VDC	78.1083
78.1436	78.1446	.245	24 VAC	78.1086
78.1437*	78.1447*	.245	120 VAC	78.1087
78.1438	78.1448	.245	240 VAC	78.1088

*(Standard)

STAINLESS STEEL "MINI" VALVE

1/4" NPT



Normally Closed	Normally Opened	Cv	Voltage	Replacement Solenoid
78.1432	78.1442	.245	12 VDC	78.1082
78.1433	78.1443	.245	24 VDC	78.1083
78.1436	78.1446	.245	24 VAC	78.1086
78.1437*	78.1447*	.245	120 VAC	78.1087
78.1438	78.1448	.245	240 VAC	78.1088

*(Standard)

ALUMINUM "MINI" VALVE

1/4" NPT



Normally Closed	Normally Opened	Cv	Voltage	Replacement Solenoid
78.2332	78.2342	0.72	12 VDC	78.1082
78.2333	78.2343	0.72	24 VDC	78.1083
78.2336	78.2346	0.72	24 VAC	78.1086
78.2337*	78.2347*	0.72	120 VAC	78.1087
78.2338	78.2348	0.72	240 VAC	78.1088

*(Standard)

BRASS "MINI" VALVE

1/4" NPT



Normally Closed	Normally Opened	Cv	Voltage	Replacement Solenoid
78.2352	78.2362	0.72	12 VDC	78.1082
78.2353	78.2363	0.72	24 VDC	78.1083
78.2356	78.2366	0.72	24 VAC	78.1086
78.2357*	78.2367*	0.72	120 VAC	78.1087
78.2358	78.2368	0.72	240 VAC	78.1088

*(Standard)

STAINLESS STEEL "MINI" VALVE

1/4" NPT



Normally Closed	Normally Opened	Cv	Voltage	Replacement Solenoid
78.2372	78.2382	0.72	12 VDC	78.1082
78.2373	78.2383	0.72	24 VDC	78.1083
78.2376	78.2386	0.72	24 VAC	78.1086
78.2377*	78.2387*	0.72	120 VAC	78.1087
78.2378	78.2388	0.72	240 VAC	78.1088

*(Standard)

3 way / 2 position



Features

- Long life MINI pneumatic valve
- Aluminum design (standard) light and compact, also available in brass and stainless steel
- Water, dust and contaminant resistant
- With DIN connector
- Available in normally opened or closed configuration

Specifications

Maximum Working Pressure

150 PSI

Working Temperature

-10°C to 50°C (14°F to 122°F)

Voltages

Standard : 120 VAC

Also available : 12 VDC, 24 VDC

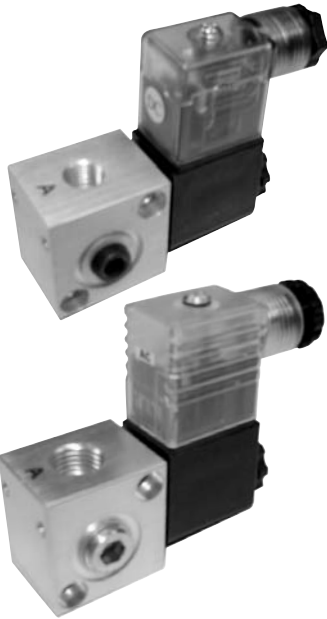
24 VAC, 240 VAC / 60 Hz

Cv

0.72

**For any questions or information about
 compressed air you may contact us at
 Tel. : 1-888-730-0501 - Fax : 1-888-730-3522
 or visit our web site at www.airmax.ca**

3 way / 2 position



STANDARD ALUMINUM MODULAR VALVE

1/8" NPT

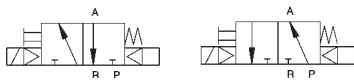
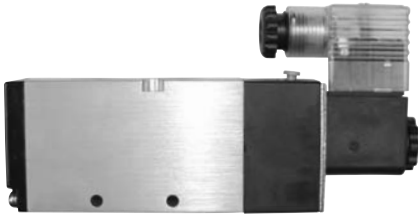
Normally Closed	Normally Opened	Cv	Voltage	Replacement Solenoid
78.2412	78.2422	0.21	12 VDC	78.5182
78.2413	78.2423	0.21	24 VDC	78.5183
78.2417*	78.2427*	0.21	120 VAC	78.5187
78.2418	78.2428	0.21	240 VAC	78.5188

*(Standard)

1/4" NPT

Normally Closed	Normally Opened	Cv	Voltage	Replacement Solenoid
78.2432	78.2442	0.7	12 VDC	78.5182
78.2433	78.2443	0.7	24 VDC	78.5183
78.2437*	78.2447*	0.7	120 VAC	78.5187
78.2438	78.2448	0.7	240 VAC	78.5188

*(Standard)



1/8" NPT

Normally Closed	Normally Opened	Cv	Voltage	Replacement Solenoid
78.3112	78.4112		12 VDC	78.5182
78.3113	78.4113		24 VDC	78.5183
78.3117*	78.4117*		120 VAC	78.5187
78.3118	78.4118		240 VAC	78.5188

*(Standard)

1/4" NPT

Normally Closed	Normally Opened	Cv	Voltage	Replacement Solenoid
78.3122	78.4122		12 VDC	78.5182
78.3123	78.4123		24 VDC	78.5183
78.3127*	78.4127*		120 VAC	78.5187
78.3128	78.4128		240 VAC	78.5188

*(Standard)

3/8" NPT

Normally Closed	Normally Opened	Cv	Voltage	Replacement Solenoid
78.3132	78.4132	0.21	12 VDC	78.5182
78.3133	78.4133	0.21	24 VDC	78.5183
78.3137*	78.4137*	0.21	120 VAC	78.5187
78.3138	78.4138	0.21	240 VAC	78.5188

*(Standard)

Features

- Industrial quality modular valve
- With DIN connector
- Available in normally opened or closed configuration

Specifications

Maximum Working Pressure

125 PSI

Working Temperature

-5°C to 40°C (23°F to 104°F)

Voltages

Standard : 120 VAC

Also available : 12 VDC

24 VAC, 240 VAC / 60 Hz

SINGLE SOLENOID VALVE

5 way / 2 position

1/8" NPT



Part No.	Cv	Voltage	Replacement Solenoid
78.5112	1.0	12 VDC	78.5182
78.5113	1.0	24 VDC	78.5183
78.5117*	1.0	120 VAC	78.5187
78.5118	1.0	240 VAC	78.5188

*(Standard)

1/4" NPT



Part No.	Cv	Voltage	Replacement Solenoid
78.5122	1.0	12 VDC	78.5182
78.5123	1.0	24 VDC	78.5183
78.5127*	1.0	120 VAC	78.5187
78.5128	1.0	240 VAC	78.5188

*(Standard)

3/8" NPT



Part No.	Cv	Voltage	Replacement Solenoid
78.5132	1.0	12 VDC	78.5182
78.5133	1.0	24 VDC	78.5183
78.5137*	1.0	120 VAC	78.5187
78.5138	1.0	240 VAC	78.5188

*(Standard)

1/2" NPT



Part No.	Cv	Voltage	Replacement Solenoid
78.5142	1.0	12 VDC	78.5182
78.5143	1.0	24 VDC	78.5183
78.5147*	1.0	120 VAC	78.5187
78.5148	1.0	240 VAC	78.5188

*(Standard)



Features

- With single solenoid
- Long lasting valve
- Solid, compact design in aluminum
- Water, dust and contaminant resistant
- With DIN connector

Specifications

Maximum Working Pressure
150 PSI

Working Temperature
-10°C to 50°C (14°F to 122°F)

Voltages
Standard : 120 VAC
Also available : 12 VDC, 24 VDC
240 VAC / 60 Hz

5 way / 2 position



Features

- With double solenoid
- Long lasting valve
- Solid compact design in aluminum
- Water, dust and contaminant resistant
- With DIN connector (except 1/8" NPT)
- Manual override easy to activate

Specifications

Maximum Working Pressure

150 PSI

Working Temperature

-10°C to 50°C (14°F to 122°F)

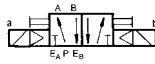
Voltages

Standard : 120 VAC

Also available : 12 VDC, 24 VDC
240 VAC / 60 Hz

DOUBLE SOLENOID VALVE

1/8" NPT



Part No.	Cv	Voltage	Replacement Solenoid	Cv
78.5212	1.0	12 VDC	78.5182	1.0
78.5213	1.0	24 VDC	78.5183	1.0
78.5217*	1.0	120 VAC	78.5187	1.0
78.5218	1.0	240 VAC	78.5188	1.0

*(Standard)

1/4" NPT



Part No.	Cv	Voltage	Replacement Solenoid	Cv
78.5222	1.47	12 VDC	78.5182	1.0
78.5223	1.47	24 VDC	78.5183	1.0
78.5227*	1.47	120 VAC	78.5187	1.0
78.5228	1.47	240 VAC	78.5188	1.0

*(Standard)

3/8" NPT



Part No.	Cv	Voltage	Replacement Solenoid	Cv
78.5232	2.5	12 VDC	78.5182	1.0
78.5233	2.5	24 VDC	78.5183	1.0
78.5237*	2.5	120 VAC	78.5187	1.0
78.5238	2.5	240 VAC	78.5188	1.0

*(Standard)

1/2" NPT



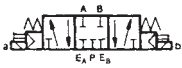
Part No.	Cv	Voltage	Replacement Solenoid	Cv
78.5242	3.77	12 VDC	78.5182	1.0
78.5243	3.77	24 VDC	78.5183	1.0
78.5247*	3.77	120 VAC	78.5187	1.0
78.5248	3.77	240 VAC	78.5188	1.0

*(Standard)

CLOSED CENTERED DOUBLE SOLENOID VALVE

5 way / 3 position

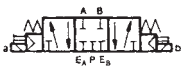
1/8" NPT



Part No.	Cv	Voltage	Replacement Solenoid
78.5312	1.0	12 VDC	78.5182
78.5313	1.0	24 VDC	78.5183
78.5317*	1.0	120 VAC	78.5187
78.5318	1.0	240 VAC	78.5188

*(Standard)

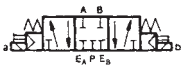
1/4" NPT



Part No.	Cv	Voltage	Replacement Solenoid
78.5322	1.4	12 VDC	78.5182
78.5323	1.4	24 VDC	78.5183
78.5327*	1.4	120 VAC	78.5187
78.5328	1.4	240 VAC	78.5188

*(Standard)

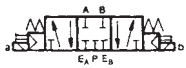
3/8" NPT



Part No.	Cv	Voltage	Replacement Solenoid
78.5332	2.0	12 VDC	78.5182
78.5333	2.0	24 VDC	78.5183
78.5337*	2.0	120 VAC	78.5187
78.5338	2.0	240 VAC	78.5188

*(Standard)

1/2" NPT



Part No.	Cv	Voltage	Replacement Solenoid
78.5342	3.77	12 VDC	78.5182
78.5343	3.77	24 VDC	78.5183
78.5347*	3.77	120 VAC	78.5187
78.5348	3.77	240 VAC	78.5188

*(Standard)



Features

- With closed centered double solenoid
- Long lasting valve
 - Solid aluminum, compact design
- Water, dust and contaminant resistant
- With DIN connector
- Manual override easy to activate

Specifications

Maximum Working Pressure

150 PSI

Working Temperature

-10°C to 50°C (14°F to 122°F)

Voltages

Standard : 120 VAC

Also available : 12 VDC, 24 VDC
240 VAC / 60 Hz

NEW

5 way / 3 position



Features

- With exhaust centered double solenoid
- Long lasting valve
- Solid aluminum, compact design
- Water, dust and contaminant resistant
- With DIN connector
- Manual override easy to activate

Specifications

Maximum Working Pressure

150 PSI

Working Temperature

-10°C to 50°C (14°F to 122°F)

Voltages

Standard : 120 VAC

Also available : 12 VDC, 24 VDC
240 VAC / 60 Hz

EXHAUST CENTERED DOUBLE SOLENOID VALVE

1/8" NPT



Part No.	Cv	Voltage	Replacement Solenoid
78.5412	1.0	12 VDC	78.5182
78.5413	1.0	24 VDC	78.5183
78.5417*	1.0	120 VAC	78.5187
78.5418	1.0	240 VAC	78.5188

*(Standard)

1/4" NPT



Part No.	Cv	Voltage	Replacement Solenoid
78.5422	1.4	12 VDC	78.5182
78.5423	1.4	24 VDC	78.5183
78.5427*	1.4	120 VAC	78.5187
78.5428	1.4	240 VAC	78.5188

*(Standard)

3/8" NPT



Part No.	Cv	Voltage	Replacement Solenoid
78.5432	2.0	12 VDC	78.5182
78.5433	2.0	24 VDC	78.5183
78.5437*	2.0	120 VAC	78.5187
78.5438	2.0	240 VAC	78.5188

*(Standard)

1/2" NPT



Part No.	Cv	Voltage	Replacement Solenoid
78.5442	3.77	12 VDC	78.5182
78.5443	3.77	24 VDC	78.5183
78.5447*	3.77	120 VAC	78.5187
78.5448	3.77	240 VAC	78.5188

*(Standard)

MANIFOLD FOR ELECTRIC VALVES - 2, 3 OR 4 STATIONS

1/8" NPT

2 stations	Part No. 3 stations	4 stations
78.5912	78.5913	78.5914
Blanking plate : 78.5910		

1/4" NPT

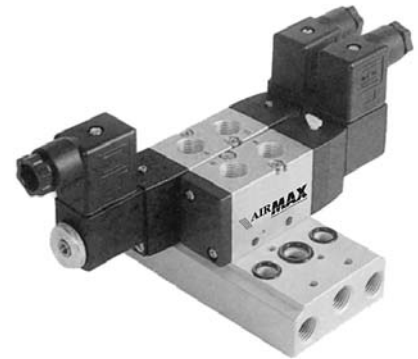
2 stations	Part No. 3 stations	4 stations
78.5922	78.5923	78.5924
Blanking plate : 78.5920		

3/8" NPT

2 stations	Part No. 3 stations	4 stations
78.5932	78.5933	78.5934
Blanking plate : 78.5930		

1/2" NPT

2 stations	Part No. 3 stations	4 stations
78.5942	78.5943	78.5944
Blanking plate : 78.5940		



Features

- Allows the serial connection of several valves
- Robust, made from aluminum

**For any questions
or information about
compressed air
you may contact us at
Tel. : 1-888-730-0501
Fax : 1-888-730-3522
or visit our web site at
www.airmax.ca**